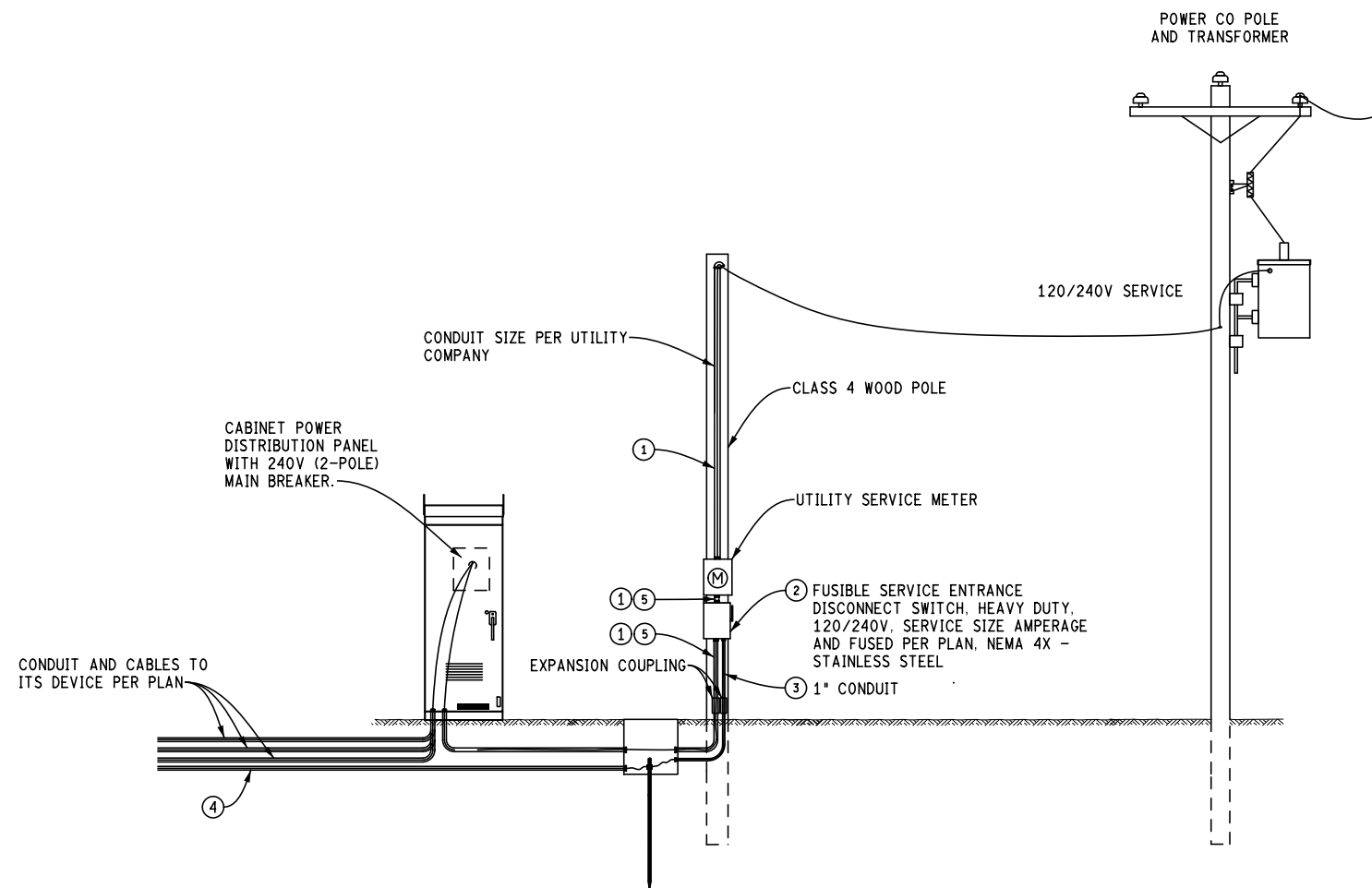


SERVICE SIZE	CONDUIT SIZE
30 AMPS	2"
60 AMPS	2"
100 AMPS	3"

TABLE 1



DETAIL 1
POWER SERVICE, OVERHEAD
3 WIRE PLUS GROUND, 1 PHASE, PER PLAN

- ① RIGID GALVANIZED STEEL (RGS) ATTACHED AS RISER ON POLE. PROPER BONDING OF METALLIC CONDUIT IS REQUIRED UTILIZING BUSHINGS OR OTHER APPROVED METHOD BY LARA AND THE LOCAL UTILITY.
- ② NEMA 4X SERVICE ENTRANCE RATED DISCONNECT ENCLOSURE. FUSE SIZES AND SERVICE RATING PER PAY ITEM AND SPECIAL PROVISION FOR POWER SERVICE. PROVIDE ONE PADLOCK FOR EACH ENCLOSURE. PADLOCK SHALL BE IN ACCORDANCE WITH THE SPECIAL PROVISIONS. PROVIDE AND ATTACH LABEL WITH SITE ADDRESS TO OUTSIDE OF ENCLOSURE.
- ③ 1-1/C #6 XHHW-2 GROUNDING ELECTRODE CONDUCTOR IN CONDUIT TO DISCONNECT SWITCH GROUND BUS. GROUND BUS BONDED TO NEUTRAL BUS.
- ④ SEE "ITS GROUNDING AND BONDING" DETAIL.
- ⑤ CONDUIT INLET SIZE BASED ON POWER SERVICE AMPERES (AMPS). VIEW TABLE 1.